

# WinVRS



## **VEHICLE RECORDING SYSTEM** Optimized for Windows XP - Windows 7

Ideal for high-traffic weighing environments such as power plants, rock quarries, concrete and asphalt plants, recycling centers, transfer stations, landfills, agricultural settings, and warehouse applications.

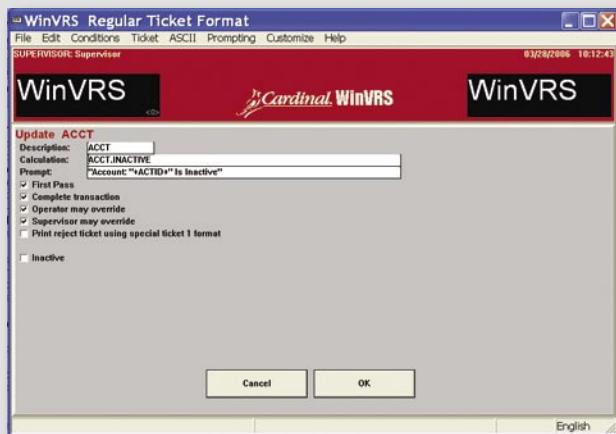
# WinVRS-TOUCH

WinVRS Featuring the Ease of a Plasma Touchscreen Display Without the Need for a Separate Keyboard



## WinVRS At Your Finger Tips!

WinVRS-TOUCH offers all the same great features as WinVRS, but comes with larger fonts and buttons for convenient touchscreen navigation. When a user enters into any WinVRS window with input prompts, an on-screen keyboard appears. Pressing the "Symbols" button brings up additional keyboard options (shown to the left).



LEGAL FOR TRADE  
WinVRS Certificate of  
Conformance Number  
05-029



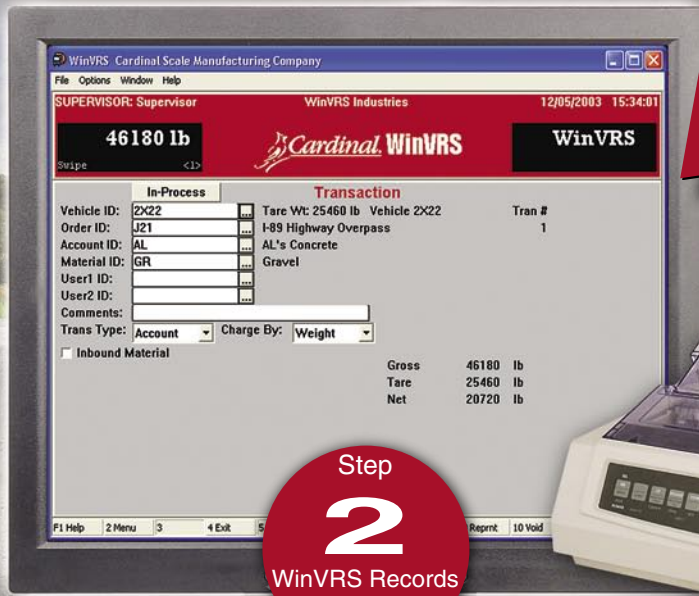
## EXTENSIVE DATABASE

Vehicles, Materials, Orders, Accounts, Trailers, Owners, and up to 10 user-definable tables are recorded. Detailed list views help manage data. WinVRS data items may be designated "Inactive" to prevent use of old items, but still maintain good records. Access<sup>®</sup> database for compatibility with Microsoft Office<sup>®</sup>.

## WEIGHT INDICATOR CONNECTIVITY

WinVRS offers Ethernet or serial communications and support for all Cardinal indicators with serial communications, and other Scale Manufacturers Association standard protocol indicators. Configurable device profiles make communications with most indicators with serial communications possible.





# WinVRS



**Step 1**  
Vehicle is Weighed

**Step 2**  
WinVRS Records Transaction

**Step 3**  
Ticket is Printed



### NETWORKING

Cardinal Scale's WinVRS system features workgroup networking for file server networking, useful in sharing data and weight communications on a network. For example, a WinVRS site may have two scales and two computers. Each computer will show both scale #1 and scale #2's weights. During busy times, operators may use both computers to weigh trucks on both scales, and then during less busy times a single operator may work at either computer and use the F3-scale selection key to weigh trucks on both scales.



### ACCOUNTING

Interface available for Quickbooks®, Peachtree®, Redwing®, and others. Invoices may be configured for each transaction to create an invoice or groupings so that transactions for a day, week, or month for a customer are grouped into a single invoice. Cash, check, and credit card transactions may be imported into sales receipts for tracking and reporting.



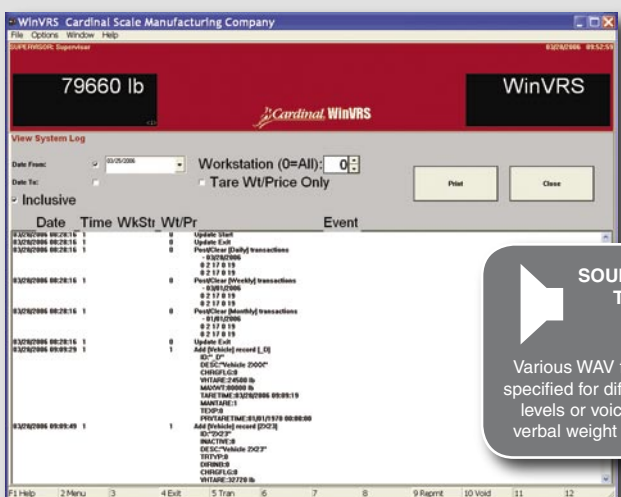
### REPORTING

Reporting is provided using the powerful Crystal Reports® engine. Chronological Transaction Log, Vehicle Log, Vehicle Summary, Material Summary, Account Log, Account Summary, Account Detail Summary, Owner Log, Owner Summary, and many others are provided standard. Custom reports may be purchased from Cardinal, or customer or dealer may purchase report generator option to create or modify reports. Reports may be exported to Excel®, Acrobat®, Word®, HTML, and many other formats.



### CUSTOMIZATION

The formatter-customize utility provides a speedy way for Cardinal Scale to customize many aspects of operations. Additional database fields may be added and display screens may be customized. For example, with custom programming by Cardinal Scale, additional tax fields may be added and calculations updated to include additional taxes.



**SOUND OUTPUT TO INDICATE WEIGHT ON SCALE**  
Various WAV files may be specified for different weight levels or voice mode for verbal weight information.



### SECURITY AND EVENT LOGGING

Operator profiles may be configured for various levels of access. WinVRS's system log maintains record of all database item changes, transactions voiding, editing, and posting.

### IMAGE FILE ASSOCIATION WITH ITEMS

For example, in the WinVRS material list view an image may be associated with each material easing operator usage and increasing accuracy selecting the appropriate material.

