

CAMBRIDGE

Model 660-Coil Series Concentrated Load Scales

60,000 # CAPACITY



COC#: 96-157A1



MADE IN THE USA

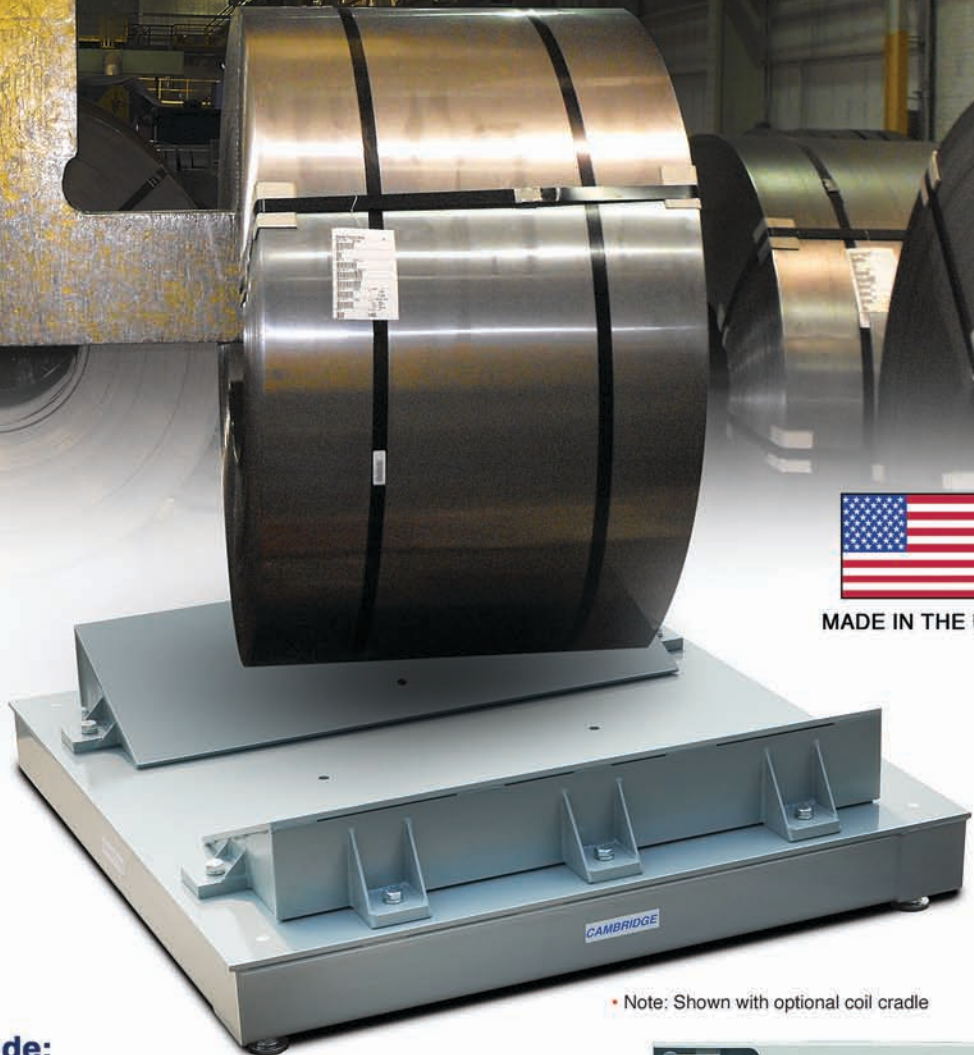
Applications:

- Steel Coils
- Aluminum Coils
- Copper Coils
- Cable Spools
- Billets
- Charge Weighing
- Castings
- Steel Scrap

Standard Features Include:

- 10,000 Through 60,000 Lb Capacities
- Cross Strutted Structural Tubular Steel Construction.
- 1/2 Inch Thick Smooth Carbon Steel Deck Plate.
- Four Internally Mounted, IP 67 Rated Water Resistant Load Cells.
- Self Checking Captive Ball Leveling Feet.
- Polycarbonate NEMA 4x junction box.
- High Strength Grade 5 Hardware.
- Top Access Leveling.
- Durable Urethane Enamel Paint.
- 25 Foot Heavy Duty, High Visibility, Shielded Indicator Cable
- Eye Bolt Holes for Easy Setup and Moving.

• Note: Shown with optional coil cradle



Cambridge concentrated load scales feature cross strutted tubular steel construction.



Cambridge Scale Works, Inc. • P O Box 670 • Honey Brook, PA 19344
(800) 292-7640 • (610) 273-7040 • www.cambridgescale.com

C A M B R I D G E

Model 660-Coil Series Concentrated Load Scales



Accessories:

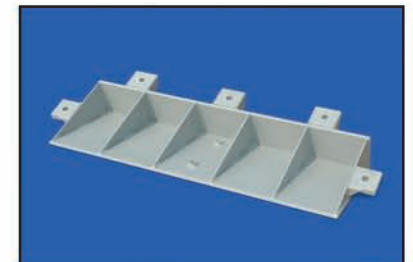
- Bumper Guards
- Coil Cradle
- Indicator/Printer Stands
- Locator Brackets



Easy access to side mounted polycarbonate NEMA 4x junction box.



Self checking captive ball leveling feet.



Optional coil cradles available for safely and efficiently weighing coils and spools.

Red text indicates NTEP approval.

SIZE	CAPACITY	LOAD CELLS QUANTITY & CAPACITY	APPROX. SHIP WEIGHT
48" X 48" X 4.5"	10,000	4 X 5,000 Lb. Each	725 Lb.
48" X 48" X 5.5"	20,000	4 X 10,000 Lb. Each	795 Lb.
48" X 48" X 6.5"	40,000	4 x 15,000 Lb. Each	1,000 Lb.
48" X 72" X 4.5"	10,000	4 X 5,000 Lb. Each	955 Lb.
48" X 72" X 5.5"	20,000	4 X 10,000 Lb. Each	1,290 Lb.
48" X 72" X 6.5"	40,000	4 x 15,000 Lb. Each	1,530 Lb.
60" X 60" X 4.5"	10,000	4 X 5,000 Lb. Each	1,106 Lb.
60" X 60" X 5.5"	20,000	4 X 10,000 Lb. Each	1,254 Lb.
60" X 60" X 6.5"	40,000	4 x 15,000 Lb. Each	1,600 Lb.
60" X 60" X 7.5"	60,000	4 X 20,000 Lb. Each	1,750 Lb.
60" X 84" X 5.5"	20,000	4 X 10,000 Lb. Each	2,098 Lb.
60" X 84" X 6.5"	40,000	4 x 15,000 Lb. Each	2,150 Lb.
60" X 84" X 7.5"	60,000	4 X 20,000 Lb. Each	2,400 Lb.
72" X 72" X 5.5"	20,000	4 X 10,000 Lb. Each	2,020 Lb.
72" X 72" X 6.5"	40,000	4 x 15,000 Lb. Each	2,200 Lb.
72" X 72" X 7.5"	60,000	4 X 20,000 Lb. Each	2,500 Lb.
72" X 96" X 5.5"	20,000	4 X 10,000 Lb. Each	2,550 Lb.
72" X 96" X 6.5"	40,000	4 x 15,000 Lb. Each	2,700 Lb.
72" X 96" X 7.5"	60,000	4 X 20,000 Lb. Each	3,100 Lb.
84" X 84" X 5.5"	20,000	4 X 10,000 Lb. Each	2,650 Lb.
84" X 84" X 6.5"	40,000	4 x 15,000 Lb. Each	2,800 Lb.
84" X 84" X 7.5"	60,000	4 X 20,000 Lb. Each	3,200 Lb.

Specifications subject to change. Custom sizes and capacities available.

- Note: Maximum crane speed: 12 feet per minute

Distributed By:

• Note: Cambridge offers a full line of indicators for your weighing needs. All indicators pictured are available in battery operation. Visit our website for more information.

Cambridge Scale Works, Inc. will warrant this product for one full year against defects in material and/or workmanship.



Cambridge Scale Works, Inc. • P O Box 670 • Honey Brook, PA 19344
(800) 292-7640 • (610) 273-7040 • www.cambridgescale.com